

GUIDE TO DRAWING THIS DINOSAUR



INTRODUCTION

THE GRID DRAWING

METHOD

Welcome to the Grid Drawing Method booklet!

This method is a fantastic way to improve your drawing skills and create accurate, detailed works of art. By breaking down a reference image into smaller, manageable sections, you can focus on one part at a time, making the drawing process simpler and more precise.

What is the Grid Drawing Method?

The Grid Drawing Method involves placing a grid over a reference image and then drawing a grid of the same proportions on your drawing paper. You draw what you see in each square of the grid on the reference image into the corresponding square on your drawing paper. This helps you focus on small sections of the image, making it easier to draw accurately.

What's in This Booklet?

Page 1: Reference Image

This page contains the original reference image. Take a moment to study it and familiarize yourself with the subject matter. This is the image you will be replicating using the grid drawing method.

Page 2: Reference Image with Grid Overlay

On this page, you will see the reference image with a grid overlay. This grid divides the image into smaller sections, making it easier to break down the drawing process. You will use this as your guide while drawing.

Pages 3-4: Printable Grid for Your Drawing

These pages contain a blank grid that you can print out. Use this grid on your drawing paper to replicate the grid overlay on the reference image. Ensure that the number of squares and their proportions match the grid overlay on the reference image.

INSTRUCTIONS THE GRID DRAWING METHOD

Steps to Follow

1. Print the Grids

Print out the grids on pages 3 and 4. If your drawing paper is larger than the printable grids, you can scale the grids accordingly.

2. Prepare Your Drawing Paper

Place the printed grid under your drawing paper and lightly trace the grid lines using a pencil. Ensure that the grid on your drawing paper matches the proportions and number of squares on the reference image grid.

3. Start Drawing

Begin by focusing on one square at a time. Look at the corresponding square on the reference image and draw what you see in the matching square on your drawing paper. Pay close attention to details and take your time.

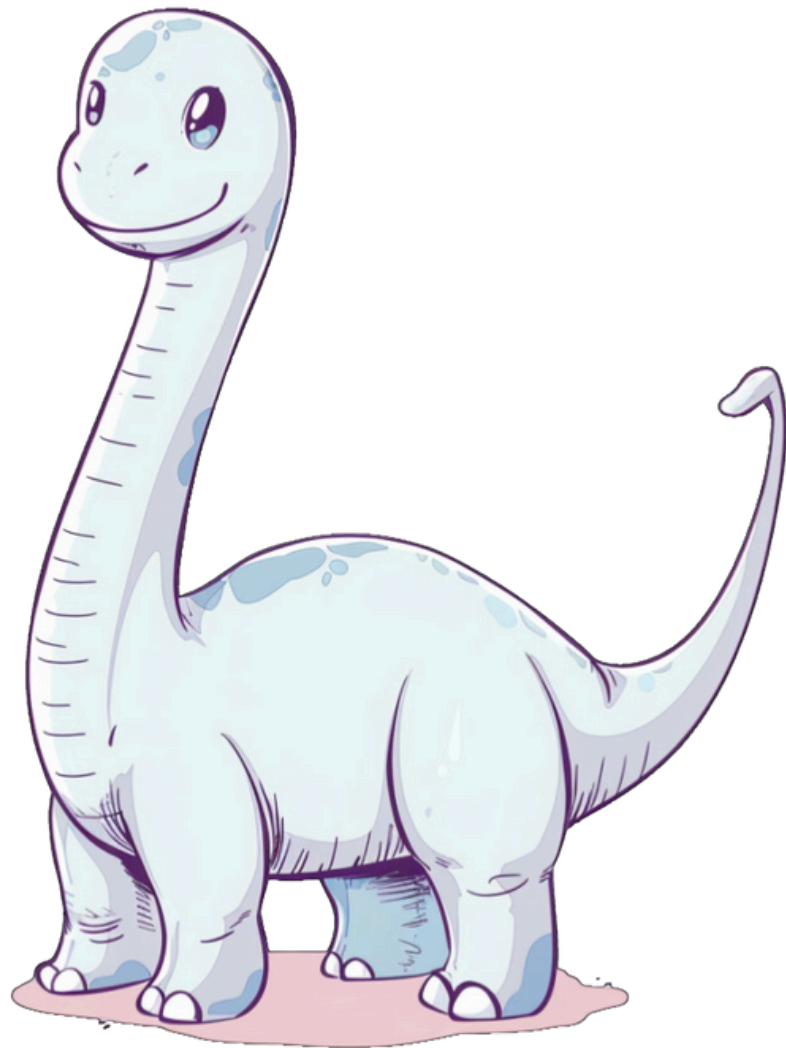
4. Check Your Progress

Periodically step back and look at your drawing as a whole to ensure everything is aligning correctly. Make adjustments as needed.

5. Final Touches

Once you have completed the drawing, you can erase the grid lines on your drawing paper if they are visible. Add any final details or shading to complete your artwork.

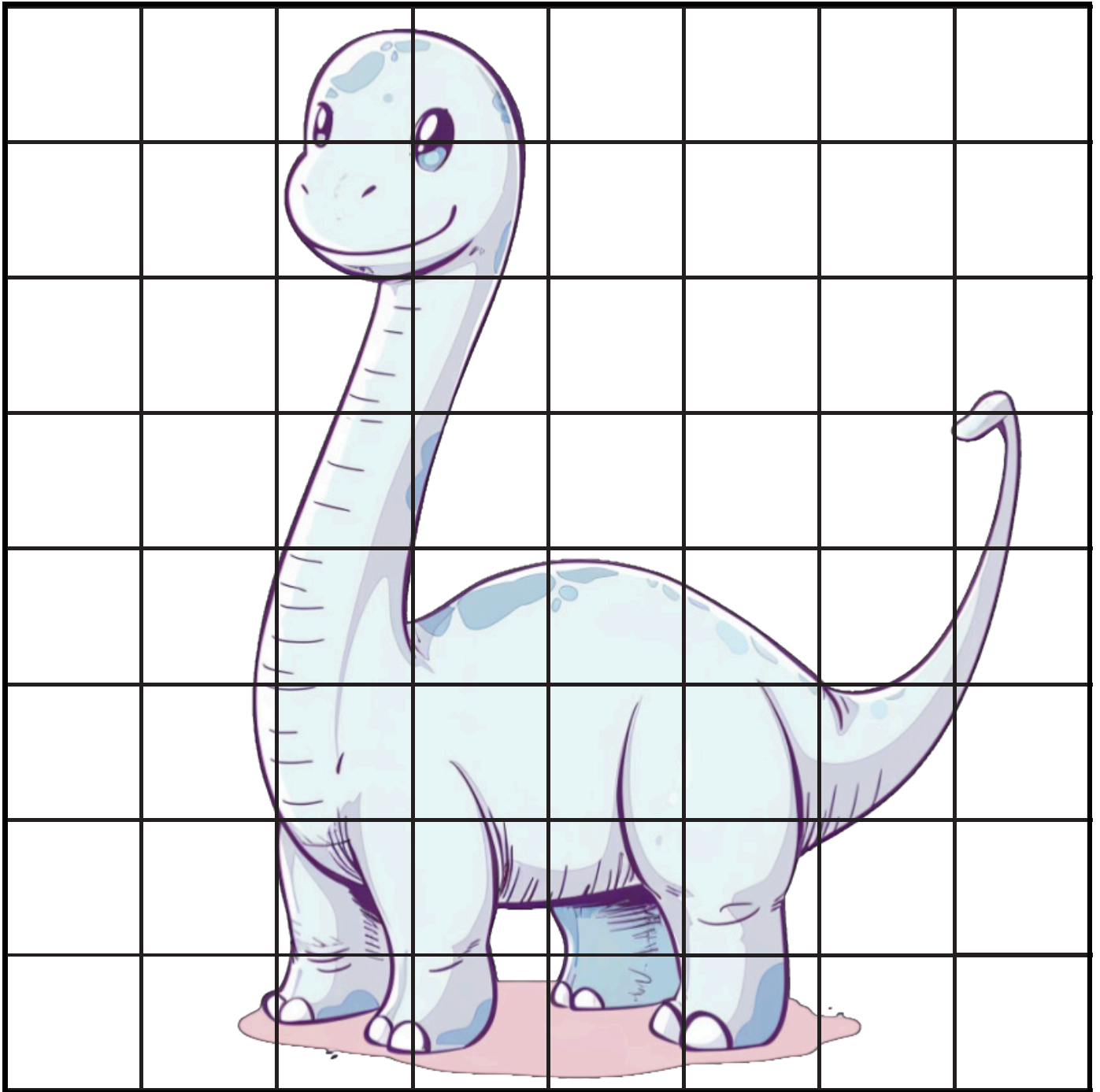
PAGE 1:
REFERENCE IMAGE



PAGE 2: GRID OVERLAY

1 2 3 4 5 6 7 8

A
B
C
D
E
F
G
H



PAGE 3:
DRAWING SURFACE

1 2 3 4 5 6 7 8

A
B
C
D
E
F
G
H

NAME: _____

